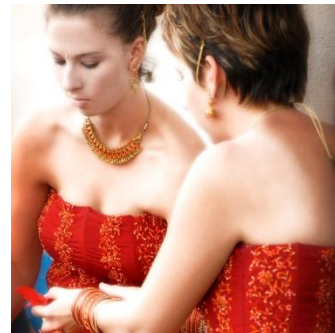




THE CLUBHOUSE

at anaheim hills golf course



Outside Catering

6501 E. Nohl Ranch Road | Anaheim Hills, CA | P 714.998.3041 x3 | F 714.221.2727
catering@hillsclubhouse.com | hillsclubhouse.com



THE CLUBHOUSE

at anaheim hills golf course

OUTSIDE CATERING PRICING INFORMATION

RECEPTION

*Includes: all tables, standard banquet chairs, standard length table linens, dance floor, risers for staging, silverware, glassware, china, equipment for outside caterer staffed buffet meal service, set up and clean up, guest tableside servers, cake cutting service, no host bar, soft drinks served through the bar, coffee & tea station, Green Room (Bride's dressing room), - *restrictions & limitations apply

SATURDAY EVENING (6:00pm-12:00am)

Full Ballroom:

\$8,000++ set up fee for up to 200 guests

Guests over 200 at \$40.00++ per person

Deposit: \$4,000 / Security Deposit: \$1,000

*Includes one meal service

*Maximum capacity: 350

SATURDAY FULL DAY (10:00am-12:00am)

Full Ballroom:

\$11,000++ set up fee for up to 200 guests

Guests over 200 at \$55.00++ per person

Includes one set-up and one meal service.

Additional set-ups and/or meal services @ \$15.00++ per person

Deposit: \$6,000 Security Deposit: \$1,000/meal service

*Maximum capacity: 350

Please inquire about pricing for Monday-Friday full day rental fees

FRIDAY & SUNDAY EVENING (6:00pm-12:00am) or

SATURDAY AFTERNOON (10:00am-4:00pm*)

**Afternoon end time may vary*

Full Ballroom:

\$6,000++ set up fee for up to 200 guests

Guests over 200 at \$30.00++ per person

Deposit: \$3,000 / Security Deposit: \$1,000

*Includes one meal service

*Maximum capacity: 350

1/2 Ballroom:

\$3,000++ set up fee for up to 100 guests

Guests over 100 at \$30.00++ per person

Deposit: \$1,500 / Security Deposit: \$1,000

*Includes one meal service

*Maximum capacity: 135

1/4 Ballroom:

\$1,500++ set up fee for up to 50 guests

Guests over 50 at \$30.00++ per person

Deposit: \$750 / Security Deposit: \$1,000

*Includes one meal service

*Maximum capacity: 72

MONDAY - THURSDAY EVENING (6:00pm-12:00am) or

MONDAY - FRIDAY AFTERNOON (10:00am-4:00pm*)

**Afternoon end time may vary*

Full Ballroom:

\$4,000++ set up fee for up to 200 guests

Guests over 200 at \$20.00++ per person

Deposit: \$2,000 / Security Deposit: \$1,000

*Includes one meal service

*Maximum capacity: 350

1/2 Ballroom:

\$2,000++ set up fee for up to 100 guests

Guests over 100 at \$20.00++ per person

Deposit: \$1,000 / Security Deposit: \$1,000

*Includes one meal service

*Maximum capacity: 135

1/4 Ballroom:

\$1,000++ set up fee for up to 50 guests

Guests over 50 at \$20.00++ per person

Deposit: \$500 / Security Deposit: \$1,000

*Includes one meal service

*Maximum capacity: 72

To utilize The Clubhouse at Anaheim Hills using outside catering service, requirements are as follows:

- The Clubhouse at Anaheim Hills, LLC must pre-approve the caterer.
- The Clubhouse at Anaheim Hills, LLC and The City of Anaheim must be named as additionally insured with the caterer's insurance carrier for not less than \$1,000,000.00.
- The Clubhouse at Anaheim Hills, LLC must provide all alcohol at published pricing (other than pre-arranged wine or champagne at \$12++/750ml bottle).
- The Clubhouse at Anaheim Hills, LLC must provide any/all linens and/or Chiavari chairs.
- Selected & approved caterer must attend on-site walk-through meeting with Clubhouse 30+ days prior to event
- Selected caterer must provide one buffet attendant per 50 guests**

Holiday prices may vary. Prices & selections are subject to change - 08/16

All prices subject to service charge and state sales tax. 08/16



THE CLUBHOUSE

at anaheim hills golf course

CEREMONY

Includes: White Padded Chairs, White Aisle Runner, White Columns, White Trellis, Fountain, Sound System

Saturday Evening

\$2,500.00++

Friday or Sunday Evening

\$2,000.00++

Saturday Afternoon

\$1,500.00++

Monday - Thursday

\$1,000.00++

+ \$10.00++ per person in excess of 200 guests

- RECEPTION REQUIRED -

DECORATIVE ENHANCEMENTS

Chair Covers with Colored Sash

\$5.00++ each

Chiavari Chairs

\$7.00++ each

Poly Floor Length Linen

\$17.00++ each

Silver or Gold Charger Plates

\$3.00++ each

Table Mirrors & 3 Votive Candles

\$10.00++ per table

LIGHTING ENHANCEMENTS

Colored Up-Lighting in Ballroom

Full Ballroom: \$550.00++ / Half Ballroom: \$275.00++

White String Lights in Ballroom Windows

Full Ballroom: \$450.00++ / Half Ballroom: \$225.00++

Market Lighting on Terrace

West, North or East Terrace: \$700.00++

Holiday prices may vary. Prices & selections are subject to change - 08/16
All prices subject to service charge and state sales tax. 08/16



THE CLUBHOUSE

at anaheim hills golf course

BEVERAGE SERVICE

Hosted Bar Package Priced Per Person

During a Host Bar, Beverages are Complimentary to Your Guests

(minimum 2 consecutive hours, excludes shots or doubles, limit 2 drinks per order, per person)

Number of hours	Domestic Beer & House Wine	Add Import Beer & House Brands	Add Call Brands	Add Premium Brands	Add Top Shelf Brands
2	12	15	18	21	24
3	15	18	21	24	27
4	18	21	24	27	30
5	21	24	27	30	33
6	24	27	30	33	36

Bar Charges Based on Consumption

	Cash	Pre-Paid Hosted		Cash	Pre-Paid Hosted
			House Brands	6	5.50
Fruit Juices	3.50	3	Call Brands	6.75	6.25
Domestic Beer	5	4.50	Premium Brands	7.50+	7+
Imported Beer	6	5.50	Premium Wine	8+	7.50+
House Wine	7	6.50	Top Shelf	8.50+	8+
			Cordials / Cognacs	9+	8.50+

Cash Bar – Guests pay for their own beverages. Cash bar prices include tax.

Host Bar Based on Time – Host determines the type of beverages hosted hourly.

Host Bar Based on Consumption – Host is charged for drinks served.

Partial Host Bar – Host determines dollar amount and/or type to be hosted.

Keg Beer - Domestic 495+
Imported 595+

Champagne, Etc. – Martinelli's (non-alcoholic) 12
House champagne 22
Fruit punch 28 per gallon
Champagne punch 45 per gallon

Wine - Chardonnay, White Zinfandel, Cabernet, Merlot 34/750 ml bottle
Please Inquire about additional premium selections

Corkage Fee - We will prearrange service of your wine or champagne @ 12/750 ml bottle.
Larger bottles charged accordingly. No other food or beverage may be brought on premises.

Labor Charges – A private bar and bartender fee of 95 will be refunded if bar sales exceed 400.
Tray passed hors d' oeuvres or cocktail service is available for 75 /hour/server.

Holiday prices may vary. Prices & selections are subject to change.

All prices are subject to service charge and tax 08/16



THE CLUBHOUSE

at anaheim hills golf course

BANQUET BAR DRINKS

DOMESTIC BEER:

BUDWEISER & BUD LIGHT
MILLER GENUINE DRAFT
MILLER LIGHT
COORS LIGHT

IMPORTED BEER:

CORONA
HEINEKIN
SIERRA NEVADA
AMSTEL LIGHT
NEW CASTLE

HOUSE WINE:

CABERNET - WOODBRIDGE
MERLOT - WOODBRIDGE
CHARDONNAY - WOODBRIDGE
WHITE ZINFANDEL- WOODBRIDGE

PREMIUM WINE:

CABERNET - ROBERT MONDAVI
CABERNET - KENDALL JACKSON
MERLOT - ROBERT MONDAVI
MERLOT - KENDALL JACKSON
PINOT NOIR - ROBERT MONDAVI
CHARDONNAY - ROBERT MONDAVI
CHARDONNAY - KENDALL JACKSON
PINOT GRIGIO - ROBERT MONDAVI
WHITE ZINFANDEL- BERINGER

WELL/HOUSE DRINKS:

VODKA - BARTON
GIN - BARTON
RUM - CASTILLO
WHISKEY - EARLY TIMES
SCOTCH - CLAN MCGREGOR
TEQUILA - MONTEZUMA
BRANDY - CHRIS BROS

CALL DRINKS:

VODKA - SMIRNOFF
GIN - SEAGRAMS
RUM - BACARDI
2ND RUM - MALIBU RUM
WHISKEY - SEAGRAMS
SCOTCH - CUTTY SARK
TEQUILA - JOSE CUERVO

PREMIUM DRINKS:

VODKA - KETTLE ONE
GIN - BEEFEATER
RUM - CAPTAIN MORGAN
WHISKEY - JAMESON IRISH
2ND WHISKEY - JACK DANIELS
3RD WHISKEY - FIRE BALL
SCOTCH - DEWERS
TEQUILA - EL JIMADOR BLANCO

TOP SHELF DRINKS:

VODKA - GREY GOOSE
GIN - TANQUERAY
RUM - MYERS
WHISKEY - CROWN ROYAL
SCOTCH - CHIVAS
2ND SCOTCH - JOHNY BLACK LABEL
TEQUILA - PATRON SILVER
BRANDY - COURVOISIER VS

CORDIALS:

AMARETTO
BAILY'S
KAHLUA
JAGERMEISTER
HENNESEY VS
GRAND MARNI