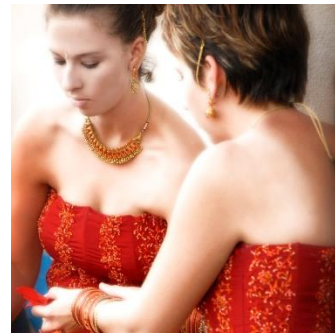




# THE CLUBHOUSE

*at anaheim hills golf course*



## *Outside Catering*

6501 E. Nohl Ranch Road | Anaheim Hills, CA | P 714.998.3041 x3 | F 714.221.2727  
catering@hillsclubhouse.com | hillsclubhouse.com



# THE CLUBHOUSE

*at anaheim hills golf course*

## OUTSIDE CATERING PRICING INFORMATION

### RECEPTION

\*Includes: all tables, standard banquet chairs, standard length table linens, dance floor, risers for staging, silverware, glassware, china, buffet equipment (if applicable), set up and clean up, guest tableside servers, cake cutting service, no host bar, soft drinks served through the bar, coffee & tea station, Green Room (Bride's dressing room), - \*restrictions & limitations apply

-Selected caterer must provide one "Front of House" attendant per 50 guests

#### SATURDAY EVENING (6:00pm-12:00am)

##### Full Ballroom:

**\$8,000++ set up fee for up to 200 guests**

Guests over 200 at \$40.00++ per person

Deposit: \$4,000 / Security Deposit: \$1,000

\*Includes one meal service

\*Maximum capacity: 350

#### SATURDAY FULL DAY (10:00am-12:00am)

##### Full Ballroom:

**\$11,000++ set up fee for up to 200 guests**

Guests over 200 at \$55.00++ per person

Includes one set-up and one meal service.

Additional set-ups and/or meal services @ \$15.00++ per person

Deposit: \$6,000 Security Deposit: \$1,000/meal service

\*Maximum capacity: 350

Please inquire about pricing for Monday-Friday full day rental fees

#### FRIDAY & SUNDAY EVENING (6:00pm-12:00am) or

#### SATURDAY AFTERNOON (10:00am-4:00pm\*)

\*Afternoon end time may vary

##### Full Ballroom:

**\$6,000++ set up fee for up to 200 guests**

Guests over 200 at \$30.00++ per person

Deposit: \$3,000 / Security Deposit: \$1,000

\*Includes one meal service

\*Maximum capacity: 350

##### 1/2 Ballroom:

**\$3,000++ set up fee for up to 100 guests**

Guests over 100 at \$30.00++ per person

Deposit: \$1,500 / Security Deposit: \$1,000

\*Includes one meal service

\*Maximum capacity: 135

##### 1/4 Ballroom:

**\$1,500++ set up fee for up to 50 guests**

Guests over 50 at \$30.00++ per person

Deposit: \$750 / Security Deposit: \$1,000

\*Includes one meal service

\*Maximum capacity: 72

#### MONDAY - THURSDAY EVENING (6:00pm-12:00am) or

#### MONDAY - FRIDAY AFTERNOON (10:00am-4:00pm\*)

\*Afternoon end time may vary

##### Full Ballroom:

**\$4,000++ set up fee for up to 200 guests**

Guests over 200 at \$20.00++ per person

Deposit: \$2,000 / Security Deposit: \$1,000

\*Includes one meal service

\*Maximum capacity: 350

##### 1/2 Ballroom:

**\$2,000++ set up fee for up to 100 guests**

Guests over 100 at \$20.00++ per person

Deposit: \$1,000 / Security Deposit: \$1,000

\*Includes one meal service

\*Maximum capacity: 135

##### 1/4 Ballroom:

**\$1,000++ set up fee for up to 50 guests**

Guests over 50 at \$20.00++ per person

Deposit: \$500 / Security Deposit: \$1,000

\*Includes one meal service

\*Maximum capacity: 72

#### To utilize The Clubhouse at Anaheim Hills using outside catering service, requirements are as follows:

- The Clubhouse at Anaheim Hills, LLC must pre-approve the caterer.
- The Clubhouse at Anaheim Hills, LLC and The City of Anaheim must be named as additionally insured with the caterer's insurance carrier for not less than \$1,000,000.00.
- The Clubhouse at Anaheim Hills, LLC must provide all alcohol at published pricing (other than pre-arranged wine or champagne at \$12++/750ml bottle).
- The Clubhouse at Anaheim Hills, LLC must provide any/all linens and/or Chiavari chairs.
- Selected & approved caterer must attend on-site walk-through meeting with Clubhouse 30+ days prior to event

Holiday prices may vary. Prices & selections are subject to change

All prices subject to service charge and state sales tax. 09/17



# THE CLUBHOUSE

*at anaheim hills golf course*

## **CEREMONY**

Includes: White Padded Chairs, White Aisle Runner, White Columns, White Trellis, Fountain, Sound System

### **Saturday Evening**

\$2,500.00++

### **Friday or Sunday Evening**

\$2,000.00++

### **Saturday Afternoon**

\$1,500.00++

### **Monday - Thursday**

\$1,000.00++

+ \$10.00++ per person in excess of 200 guests

- RECEPTION REQUIRED -

## **DECORATIVE ENHANCEMENTS**

### **Chair Covers with Colored Sash**

\$5.00++ each

### **Chiavari Chairs**

\$7.00++ each

### **Poly Floor Length Linen**

\$17.00++ each

### **Silver or Gold Charger Plates**

\$3.00++ each

### **Table Mirrors & 3 Votive Candles**

\$10.00++ per table

### **White Dance Floor**

Inquire about pricing

## **LIGHTING ENHANCEMENTS**

### **Colored Up-Lighting in Ballroom**

Full Ballroom: \$550.00++ / Half Ballroom: \$275.00++

### **White String Lights in Ballroom Windows**

Full Ballroom: \$450.00++ / Half Ballroom: \$225.00++

### **Market Lighting on Terrace**

West, North or East Terrace: \$700.00++

Holiday prices may vary. Prices & selections are subject to change  
All prices subject to service charge and state sales tax. 09/17



# THE CLUBHOUSE

*at anaheim hills golf course*

## **BEVERAGE SERVICE**

### **Hosted Bar Package Priced Per Person**

During a Host Bar, Beverages are Complimentary to Your Guests  
(minimum 2 consecutive hours, excludes shots or doubles, limit 2 drinks per order, per person)

Number of hours	Domestic & Imported				
	Beer, House Wine & Soft Drinks	Add House Brands	Add Call Brands	Add Premium Brands	Add Top Shelf Brands
2	12	15	18	21	24
3	15	18	21	24	27
4	18	21	24	27	30
5	21	24	27	30	33
6	24	27	30	33	36

### **Bar Charges Based on Consumption**

	Cash	Pre-Paid Hosted		Cash	Pre-Paid Hosted
Soft Drinks	2.50	2	House Brands	6	5.50
Fruit Juices	3.50	3	Call Brands	6.75	6.25
Domestic Beer	5	4.50	Premium Brands	7.50+	7+
Imported Beer	6	5.50	Premium Wine	8+	7.50+
House Wine	7	6.50	Top Shelf	8.50+	8+
			Cordials / Cognacs	9+	8.50+

**Cash Bar** – Guests pay for their own beverages. Cash bar prices include tax.

**Host Bar Based on Time** – Host determines the type of beverages hosted hourly.

**Host Bar Based on Consumption** – Host is charged for drinks served.

**Partial Host Bar** – Host determines dollar amount and/or type to be hosted.

**Keg Beer** - Domestic 525+  
Imported 650+

**Champagne, Etc.** – Martinelli's (non-alcoholic) 12  
House champagne 22  
Fruit punch 28 per gallon  
Champagne punch 45 per gallon

**Wine** - Chardonnay, White Zinfandel, Cabernet, Merlot 34/750 ml bottle  
*Please Inquire about additional premium selections*

**Corkage Fee** - We will prearrange service of your wine or champagne @ 12/750 ml bottle.  
Larger bottles charged accordingly. No other food or beverage may be brought on premises.

**Labor Charges** – A private bar and bartender fee of 95 will be refunded if bar sales exceed 400.  
Tray passed hors d' oeuvres or cocktail service is available for 75 /hour/server.

Holiday prices may vary. Prices & selections are subject to change.  
All prices are subject to service charge and tax 09/17



# THE CLUBHOUSE

*at anaheim hills golf course*

## **BANQUET BAR DRINKS**

### **DOMESTIC BEER:**

BUDWEISER & BUD LIGHT  
MILLER GENUINE DRAFT  
MILLER LIGHT  
COORS LIGHT

### **IMPORTED BEER:**

CORONA  
HEINEKIN  
SIERRA NEVADA  
AMSTEL LIGHT  
NEW CASTLE

### **HOUSE WINE:**

CABERNET - WOODBRIDGE  
MERLOT - WOODBRIDGE  
CHARDONNAY - WOODBRIDGE  
WHITE ZINFANDEL- WOODBRIDGE

### **PREMIUM WINE:**

CABERNET - ROBERT MONDAVI  
CABERNET - KENDALL JACKSON  
MERLOT - ROBERT MONDAVI  
MERLOT - KENDALL JACKSON  
PINOT NOIR - ROBERT MONDAVI  
CHARDONNAY - ROBERT MONDAVI  
CHARDONNAY - KENDALL JACKSON  
PINOT GRIGIO - ROBERT MONDAVI  
WHITE ZINFANDEL- BERINGER

### **WELL/HOUSE DRINKS:**

VODKA - BARTON  
GIN - BARTON  
RUM - CASTILLO  
WHISKEY - EARLY TIMES  
SCOTCH - CLAN MCGREGOR  
TEQUILA - MONTEZUMA  
BRANDY - CHRIS BROS

### **CALL DRINKS:**

VODKA - SMIRNOFF  
GIN - SEAGRAMS  
RUM - BACARDI  
2<sup>ND</sup> RUM - MALIBU RUM  
WHISKEY - SEAGRAMS  
SCOTCH - CUTTY SARK  
TEQUILA - JOSE CUERVO

### **PREMIUM DRINKS:**

VODKA - KETTLE ONE  
GIN - BEEFEATER  
RUM - CAPTAIN MORGAN  
WHISKEY - JAMESON IRISH  
2<sup>ND</sup> WHISKEY - JACK DANIELS  
3<sup>RD</sup> WHISKEY - FIRE BALL  
SCOTCH - DEWERS  
TEQUILA - EL JIMADOR BLANCO

### **TOP SHELF DRINKS:**

VODKA - GREY GOOSE  
GIN - TANQUERAY  
RUM - MYERS  
WHISKEY - CROWN ROYAL  
SCOTCH - CHIVAS  
2<sup>ND</sup> SCOTCH - JOHNY BLACK LABEL  
TEQUILA - PATRON SILVER  
BRANDY - COURVOISIER VS

### **CORDIALS:**

AMARETTO  
BAILY'S  
KAHLUA  
JAGERMEISTER  
HENNESEY VS  
GRAND MARNI